

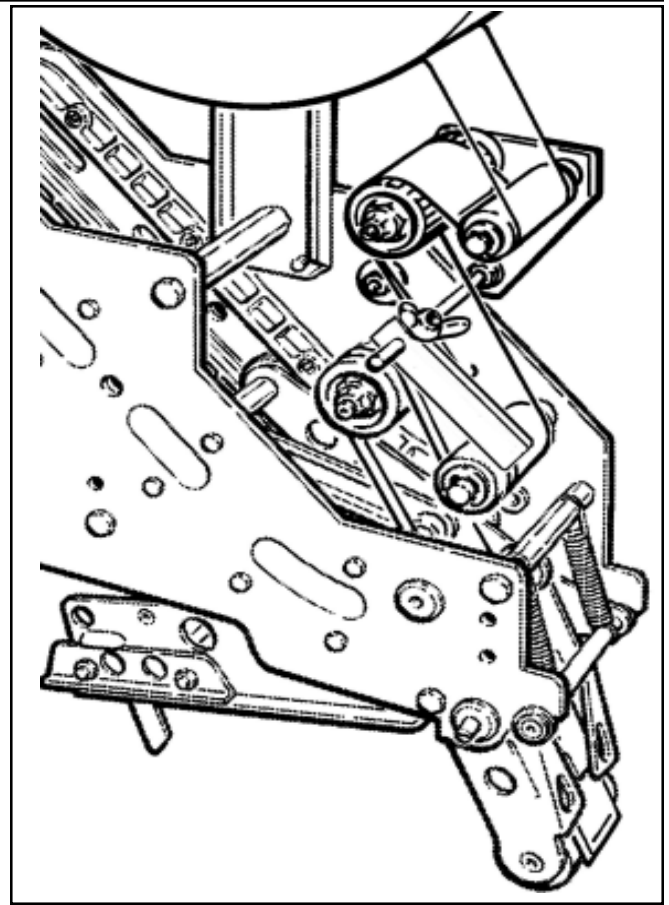
Instructions and Parts List

3M-Matic™ Tape Edge Fold Kit

For Use On:

**AccuGlide™ STD Upper and lower
Taping Heads**

Kit Part Number	Fits
78-8095-4854-4	2 Inch Upper Head
78-8095-4855-1	2 Inch Lower Head
78-8095-4852-8	3 Inch Upper Head
78-8095-4953-6	3 Inch Lower Head



**Tape Edge Fold Kit installed on
AccuGlide™ STD 2 Inch Upper Taping Head**

Purpose of Attachment

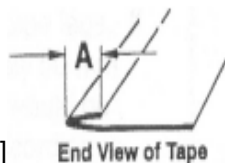
The 3M - Matic™ Edge Fold Kit attached to upper and/or lower AccuGlide™ taping heads, folds one edge of the tape strip over and provides a starting edge for removal of the tape strip. The fold can be adjusted to a minimum fold of approximately 3 mm [1/8 inch]. The kit is completely assembled and is easily attached to either upper or lower taping heads.

Note: This kit is to be used only with single planetary wound tape rolls. It is not to be used in conjunction with spliced tape products or tape dispensed through splice producing devices.

Specifications

**Tape fold over
(Dimension "A")**

Minimum - 3 mm [1/8 Inch]
Maximum - 6 mm [1/4 Inch]



End View of Tape

Tape roll Maximum Diameter:
355 mm [14 Inches] with standard
tape drum mounting on tape head.

Attachment Weight:
Packaged - 1.1 kg [2-1/2 lbs.]
Unpackaged - 0.7 kg [1-1/2 lbs.]

Tape Edge Fold Kit consists of:

Qty.	Description
1	Edge Fold Assembly
1	Capscrew - Hex Hd, M6 x 16
1	Nut - M6
1	Washer - Plain, M6
1	Washer - Fender, M6

Installation

Notes: Installation shown on upper taping head.
Lower taping head installation is the mirror image of the upper head.

Installations on most upper taping heads does not require the removal of the head from the case sealer.

For installation on the lower taping head removal of the taping head is recommended.

1. Tension roller on the taping head must be removed to install the edge fold kit.

Note: Mark the position of the tension roller in the slot so it can be placed in the same relative position when installing the edge fold kit.

Remove the tension roller by removing the M6 x 12 hex head capscrew and plain flat washer used to fasten the tension roller to the taping head frame. See Fig 1.

2. Attach the edge fold assembly to the back side of the taping head frame with the M6 x 12 hex head capscrew and plain washer (removed in step 1), along with the M6 fender washer and M6 hexnut as shown in Fig 2.

Note: Align the edge fold slots with the taping head frame slots before tightening the fastener.

3. Re-attach the tension roller assembly to the taping head in the original location (At the mark made in step 1) using the M6 x 16 hex head capscrew and plain washer supplied in this kit.

4. Loosen the adjusting nut on the tension roller that you just installed so that it is "Free Wheeling". The tension roller on the edge fold kit will now be used to apply tape tension.

Note: The illustrations in this document show the taping head set to apply 70 mm [2-3/4 Inch] tape leg length. To change the tape leg length please refer to your taping head manual for the appropriate tension roller installation.

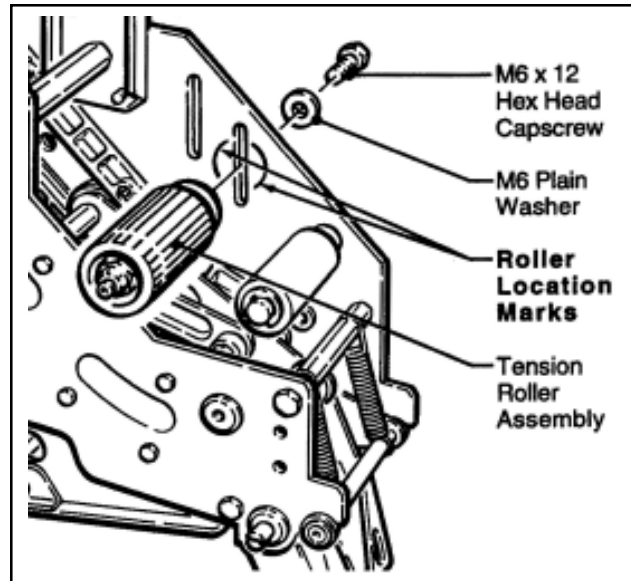


Figure 1

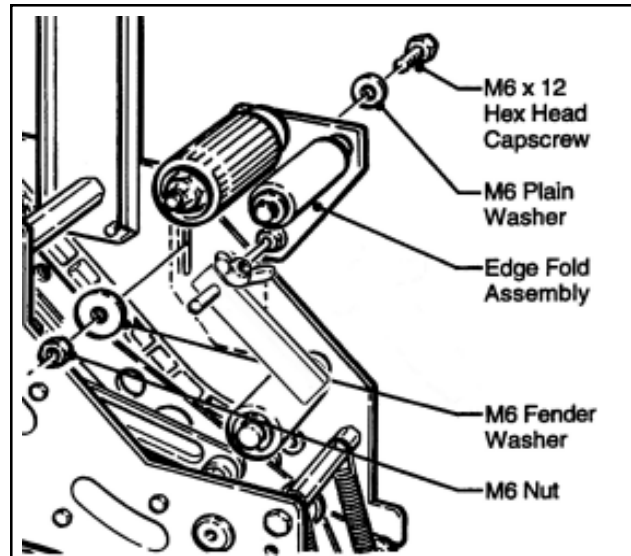


Figure 2

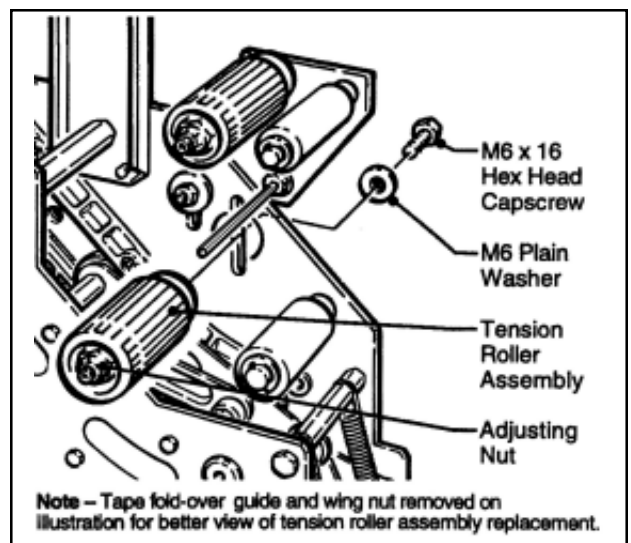


Figure 3

Installation (Continued)

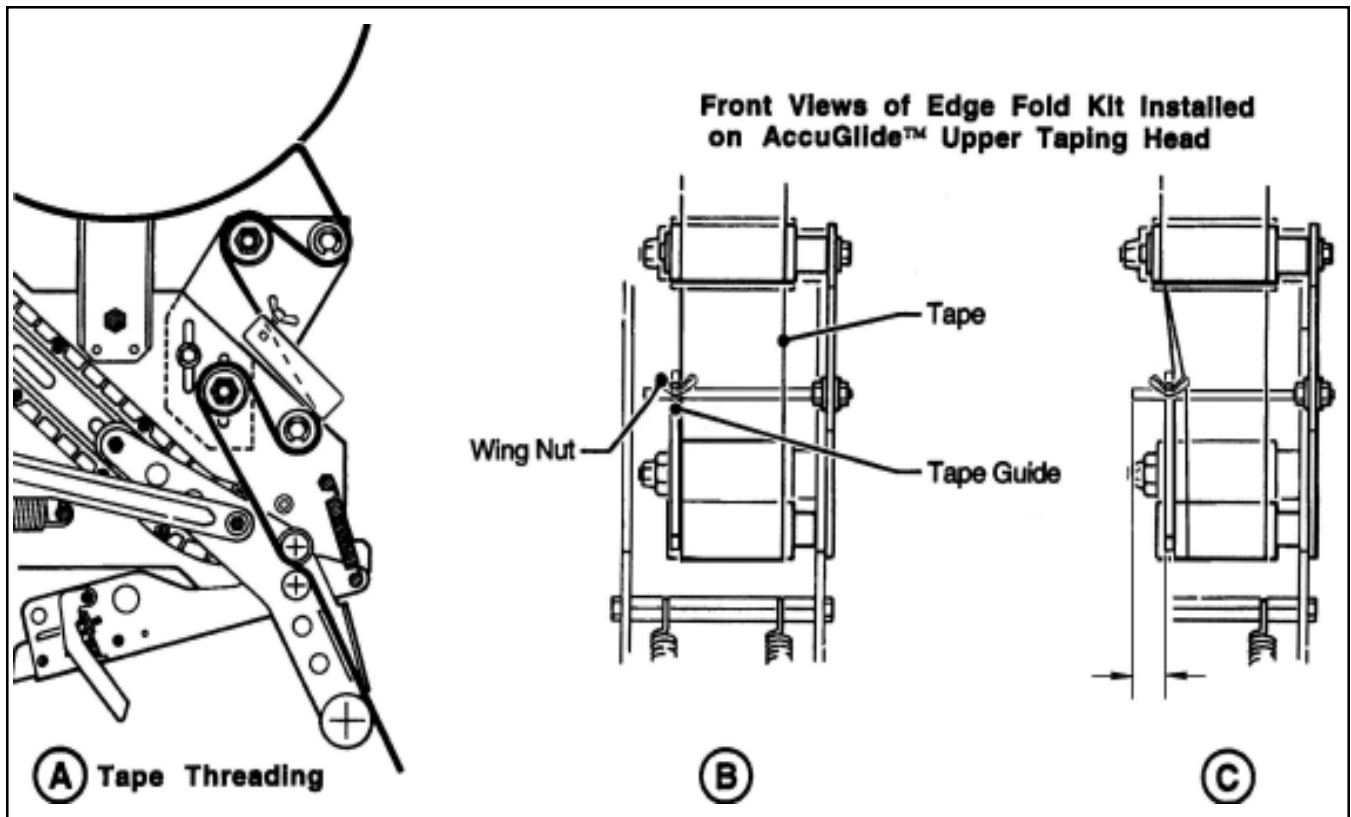


Figure 4

5. Thread tape through the edge fold assembly and taping head. See figure 4A.


Note: Adjust Tape fold-over guide out so fold-over guide does not interfere with alignment of tape when tape is threaded through taping head.

6. Adjust the tape fold-over guide for desired tape fold-over.

To obtain the desired tape edge fold, adjust the tape fold-over guide in until it touches the edge of the tape (See Fig 4B). Then, adjust the tape fold-over guide in from the rod end to the desired amount of fold as shown in figure 4C. Tighten the wing bolt to secure the tape fold-over guide in the selected position.

Note: Adjust Tape fold-over guide in to increase or out to decrease the amount of fold-over.

7. Start the fold by pinching the tape just above the fold-over guide as shown in figure 5. begin with an approximate 3 mm [1/8 Inch] fold.
8. Run several boxes through taping head/case sealer to check the fold-over. Once fold is started, the fold-over guide can be adjusted in or out to obtain the desired fold-over.

	WARNING
<p>o To reduce the risk associated with pinch and entanglement hazards.</p> <p>- Turn "Off" electrical power before performing any adjustments on the machine.</p>	

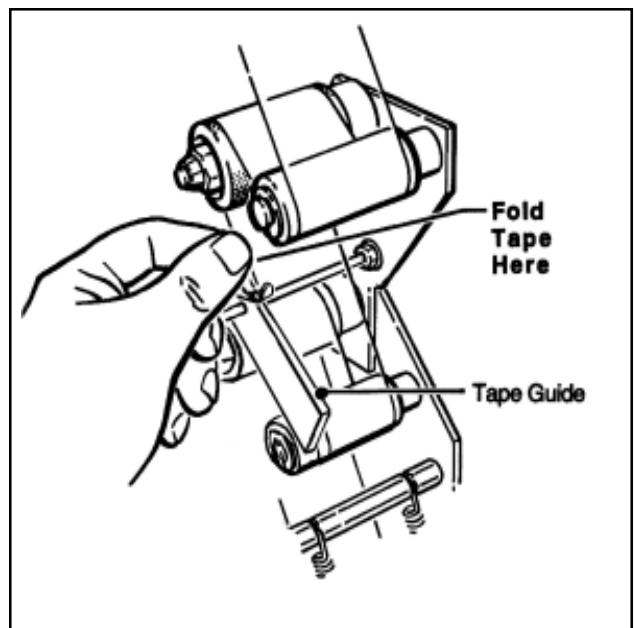
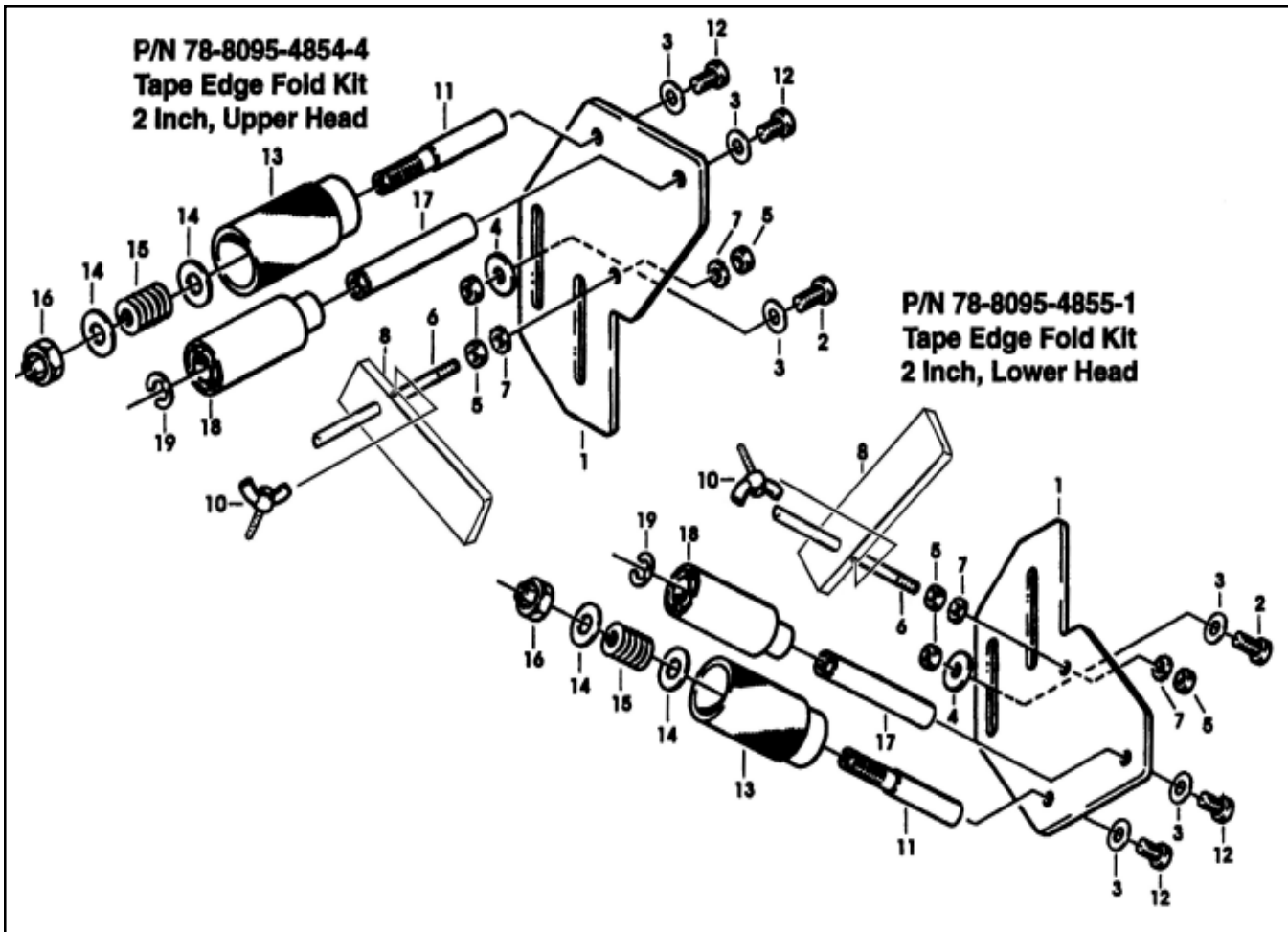


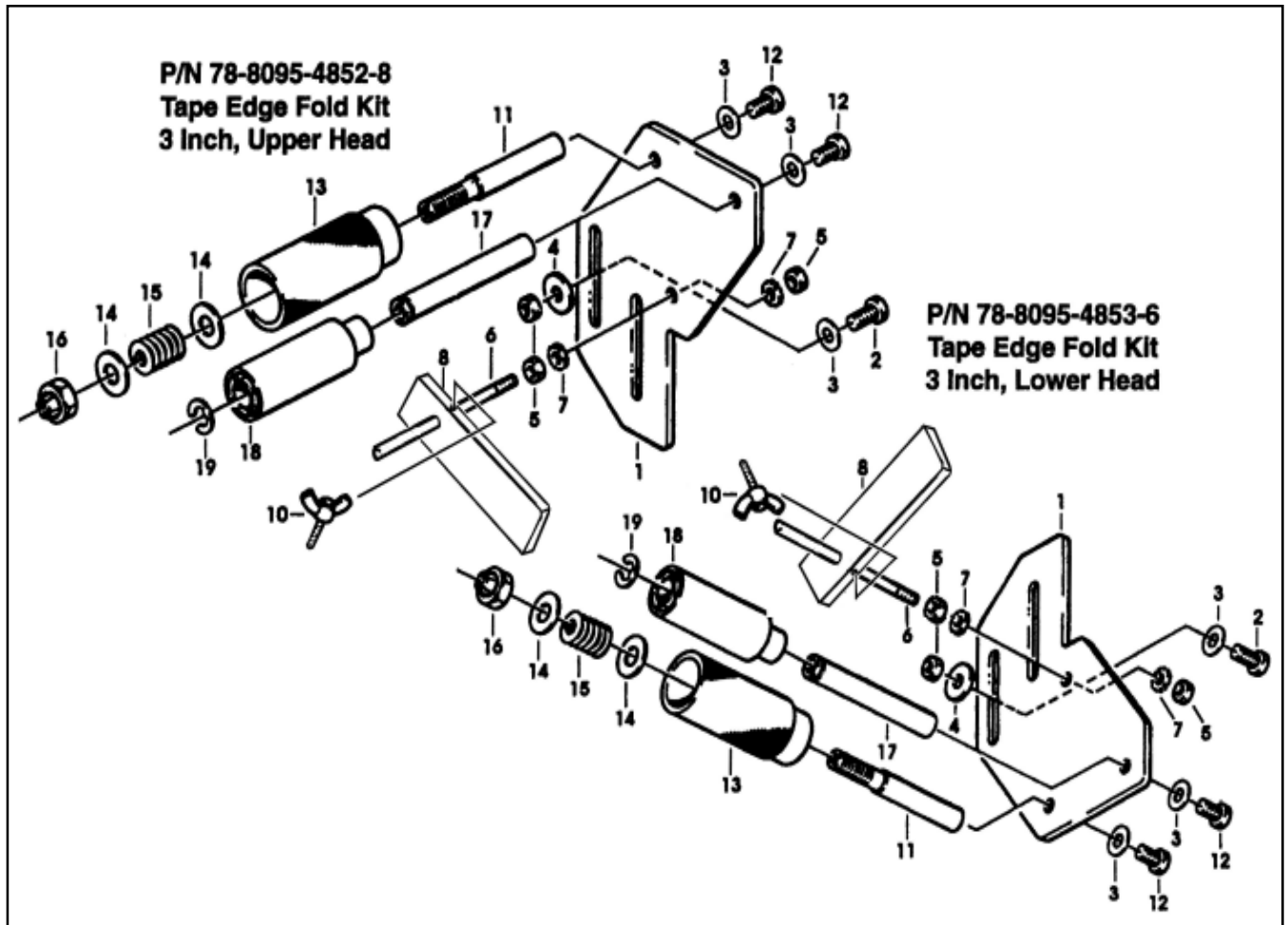
Figure 5

Parts Drawing/List - 2 Inch Edge Fold Kit



Ref. No.	3M Part Number	Description
	78-8095-4854-4	Tape Edge Fold Kit - 2 Inch, Upper Head
	78-8095-4855-1	Tape Edge Fold Kit - 2 Inch, Lower Head
1	78-8095-1066-8	Plate - Mounting
2	78-8032-0375-7	Screw - Hex Hd., M6 x 16
3	26-1000-0010-3	Washer - Plain, M6
4	78-8042-2919-9	Washer - Triple, M6
5	78-8010-7418-4	Nut - Hex, M6
6	78-8137-1333-2	Stud - 6 x 95
7	78-8094-6166-4	Washer - Star, M6
8	78-8137-1334-0	Guide - Tape Fold-over
10	78-8137-1335-7	Bolt - Guide Position
11	78-8052-6564-8	Shaft - Tension Roller
12	26-1003-5828-7	Screw - Hex Hd., M6 x 12
13	78-8052-6565-5	Roller - Tension, Upper Head
	78-8052-6606-7	Roller - Tension, Lower Head
14	78-8052-6566-3	Washer - Friction
15	78-8052-6567-1	Spring - Compression
16	78-8017-9077-1	Nut - Self Locking, M10
17	78-8052-6568-9	Shaft - Wrap Roller
18	78-8052-6569-7	Roller Wrap
19	26-1000-1613-3	Ring - Retaining

Parts Drawing/List - 3 Inch Edge Fold Kit



Ref. No.	3M Part Number	Description
	78-8095-4852-8	Tape Edge Fold Kit - 3 Inch, Upper Head
	78-8095-4853-6	Tape Edge Fold Kit - 3 Inch, Lower Head
1	78-8095-1066-8	Plate - Mounting
2	78-8032-0375-7	Screw - Hex Hd., M6 x 16
3	26-1000-0010-3	Washer - Plain, M6
4	78-8042-2919-9	Washer - Triple, M6
5	78-8010-7418-4	Nut - Hex, M6
6	78-8137-1336-5	Stud - 6 x 120
7	78-8094-6166-4	Washer - Star, M6
8	78-8137-1334-0	Guide - Tape Fold-over
10	78-8137-1335-7	Bolt - Guide Position
11	78-8054-8796-0	Shaft - Tension Roller
12	26-1003-5828-7	Screw - Hex Hd., M6 x 12
13	78-8054-8797-8	Roller - Tension, Upper Head
	78-8054-8817-4	Roller - Tension, Lower Head
14	78-8052-6566-3	Washer - Friction
15	78-8052-6567-1	Spring - Compression
16	78-8017-9077-1	Nut - Self Locking, M10
17	78-8054-8798-6	Shaft - Wrap Roller
18	78-8054-8799-4	Roller Wrap
19	26-1000-1613-3	Ring - Retaining

How To Order Replacement Parts

1. Refer to parts illustrations to find part needed and reference number.
2. Refer to parts list for correct part number.
3. Order by part number, description, attachment part number and name.
4. Replacement parts and part prices available direct from:

3M/Tape Dispenser Parts
241 Venture Drive
Amery, WI 54001-1325

800/344 9883
FAX #715/268 8153

Minimum billing on parts orders will be \$25.00
Replacement part prices available on request.

\$10.00 restocking charge per invoice on returned parts.

Note: *Outside the U.S. contact the local 3M subsidiary for parts ordering information.*

Equipment Warranty and Limited Remedy: THE FOLLOWING WARRANTY IS MADE IN LIEU OF ALL OTHER WARRANTIES, EXPRESS OR IMPLIED, INCLUDING, BUT NOT LIMITED TO, THE IMPLIED WARRANTY OF MERCHANTABILITY, THE IMPLIED WARRANTY OF FITNESS FOR A PARTICULAR PURPOSE AND ANY IMPLIED WARRANTY ARISING OUT OF A COURSE OF DEALING, A CUSTOM OR USAGE OF TRADE:

3M warrants that its **3M-Matic™ Tape Edge Fold Kit**, will be free from defects for ninety (90) days after delivery. If any part is proved to be defective within the warranty period, then the exclusive remedy and 3M's and seller's sole obligation shall be, at 3M's option, to repair or replace the part, provided the defective part is returned immediately to 3M's factory or an authorized service station designated by 3M. A part will be presumed to have become defective after the warranty period unless the part is received or 3M is notified of the problem no later than five (5) calendar days after the warranty period. If 3M is unable to repair or replace the part within a reasonable time, then 3M, at its option, will replace the equipment or refund the purchase price. 3M shall have no obligation to provide or pay for the labor required to install the repaired or replacement part. 3M shall have no obligation to repair or replace (1) those parts failing due to operator misuse, carelessness, or due to any accidental cause other than equipment failure, or (2) parts failing due to non-lubrication, inadequate cleaning, improper operating environment, improper utilities or operator error.

Limitation of Liability: 3M and seller shall not be liable for direct, indirect, special, incidental or consequential damages based upon breach of warranty, breach of contract, negligence, strict liability or any other legal theory.

The foregoing Equipment Warranty and Limited Remedy and Limitation of Liability may be changed only by a written agreement signed by authorized officers of 3M and seller.



3M Industrial Adhesives and tapes
3M Center, Building 220-5E-06
St. Paul, MN 55144-1000

"3M-Matic" is a registered trademark of 3M,
St. Paul, Minnesota 55144-1000

Printed in U.S.A.

© 3M 2007 44-0009-1884-5(C)