

Instructions and Parts List

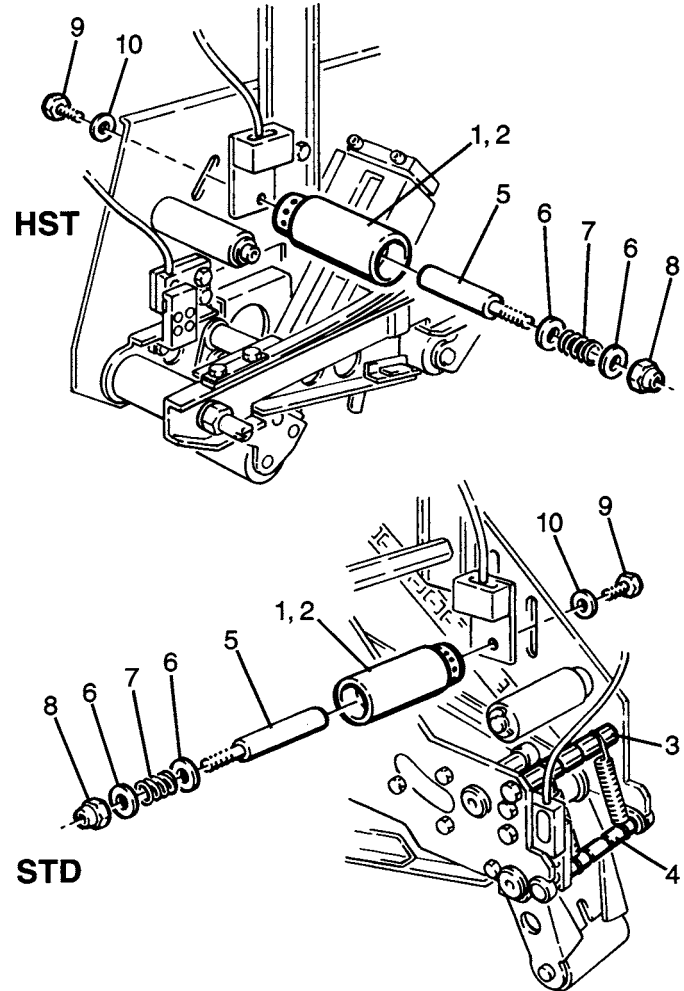
3M-Matic™

P/N 78-8079-5586-5 3-Inch Adapter Kit (Tape Application Sensor)

For use on 3M-Matic™
AccuGlide™ STD, AccuGlide™ II STD, or
AccuGlide™ HST Upper and Lower
3-Inch Taping Heads

Purpose of Kit

This kit adapts AccuGlide™ 3-inch taping heads for use with 3M-Matic™ Tape Application Sensor Kit. All parts necessary to adapt one (1) upper and one (1) lower taping head are included.



Contents of Kit (See illustration above)

Ref.	Part No.	Description	Qty.
1	78-8095-1179-9	Tension Roller – Upper Taping Head	1
2	78-8095-1181-5	Tension Roller – Lower Taping Head	1
3	78-8095-1184-9	Spacer – Hex	2
4	78-8095-1183-1	Shaft – Magnet	2
5	78-8054-8796-0	Shaft – Tension Roller	2
6	78-8052-6566-3	Washer – Friction	4
7	78-8052-6567-1	Spring – Compression	2
8	78-8017-9077-1	Nut – Self Locking, M10	2
9	26-1003-5829-5	Screw – Hex Hd, M6 x 12	2
10	26-1000-0010-3	Washer – Plain, M6	2

How To Order Replacement Parts

1. Order by part number, description, kit name and kit part number.
2. Replacement parts and part prices available direct from:

3M Tape Dispenser Parts
241 Venture Drive
Amery, WI 54001-1325

800/344 9883
FAX #715/268 8153

Minimum billing on parts orders will be \$10.00.
Replacement parts prices available on request.

Installation

General Information – All Taping Heads

This 3-Inch Adapter Kit includes parts for AccuGlide STD, AccuGlide II STD or AccuGlide HST taping heads. The two hex spacers and two magnet shafts are **not used** on AccuGlide HST taping heads.

The taping head illustrations in this instruction sheet show the upper taping head only. Lower taping head is a mirror image of the upper head.

AccuGlide STD, AccuGlide II STD

WARNING – Use care when working near tape cut-off blade as blade is extremely sharp. If care is not taken, severe injury could occur.

BOX PRESENCE SENSOR

Use the magnet and hex spacer shafts from this kit in place of the ones supplied with the Tape Application Sensor Kit. See Figure 1.

Refer to Tape Application Sensor Kit Instruction manual, pages 9-11 for complete box presence sensor instructions.

TAPE ROTATION SENSOR

(See instructions below and also refer to Tape Application Sensor kit instruction manual, page 12.)

Note – Tension roller must be replaced with new roller provided in kit. The 3-inch roller is a replacement for the 2-inch roller that comes with the Tape Application Sensor Kit. Tension roller is mounted in one of two slots on taping head side plate and is located in a certain position within the slot. Mark location of roller with tape to assure installation of new roller in same relative position as old roller.

1. Remove the M6 x 10 mm hex head capscrew that fastens the tension roller shaft to the taping head side plate and remove the roller/shaft assembly. See Figure 2.

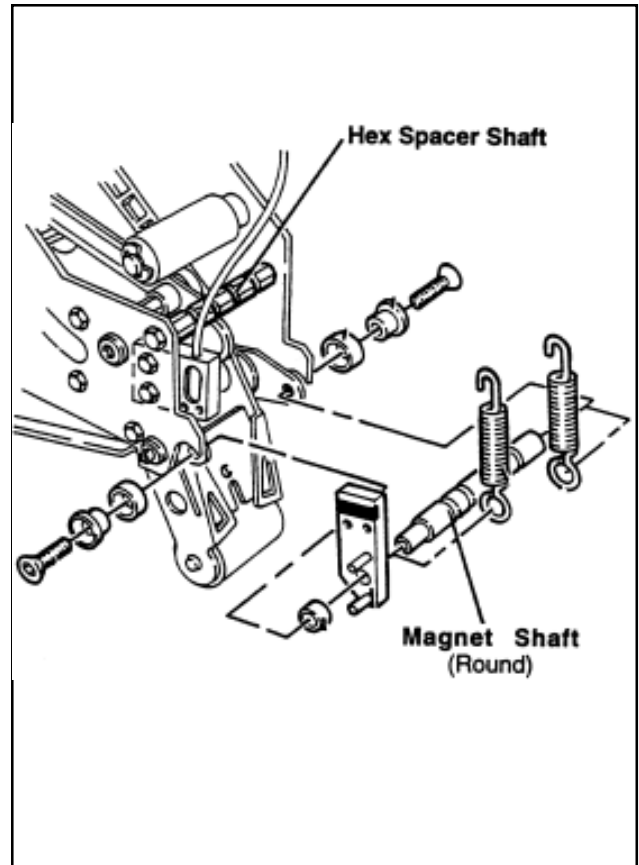


Figure 1

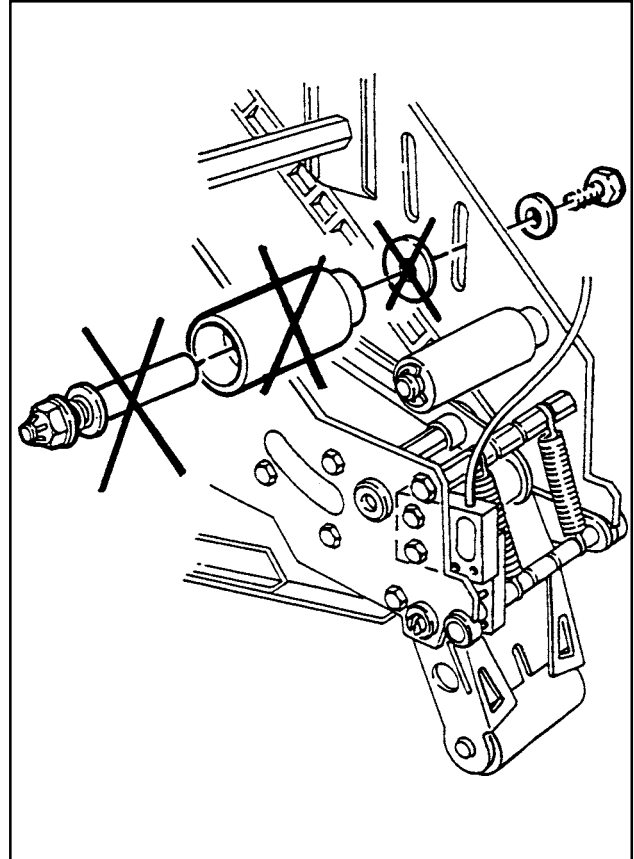


Figure 2

Installation (Continued)

- Assemble tension roller, friction washers (2), compression spring and self-locking M10 nut to roller shaft as shown in Figure 3.
- Install shaft assembly and tension roller to taping head using M6 x 10 hex head capscrew and M6 plain washer as shown. Tape rotation sensor (from Tape Application Sensor Kit) is installed between roller/shaft and taping head side plate and **replaces** plain washer that was used previously. **Be sure tape rotation sensor cable is pointed in same direction as box presence sensor cable.**

Note – Be sure to install correct roller on upper/lower taping heads. After placing roller on shaft, rotate roller (roller on upper taping head should rotate in counterclockwise direction, roller on lower head should rotate in clockwise direction) as viewed from outer side of roller. If rotation is incorrect, switch rollers.

- Adjust roller tension as described in taping head and/or case sealer manual.

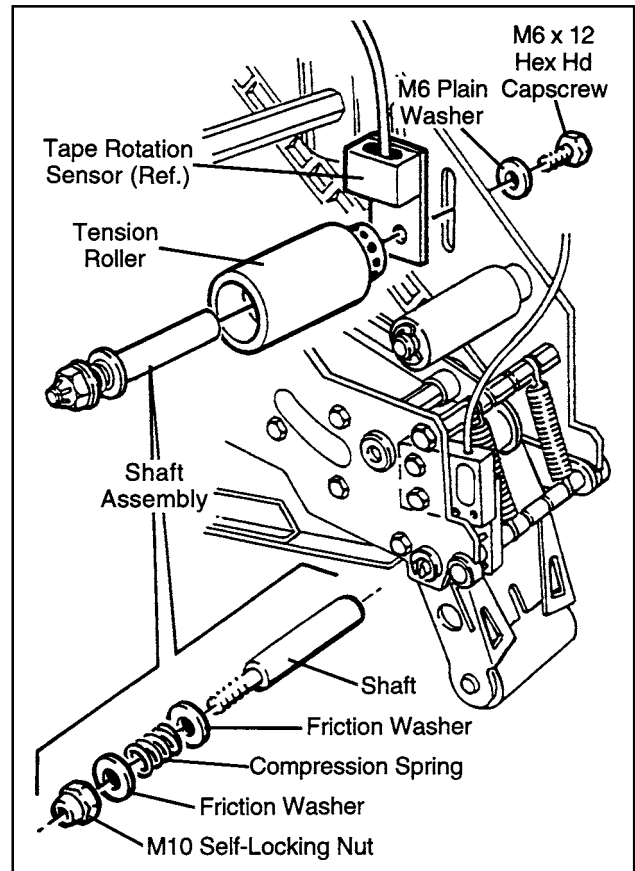


Figure 3

AccuGlide HST Taping Heads

BOX PRESENCE SENSOR

See Tape Application Sensor Kit Instruction manual, pages 14 -18. (No special parts are required for installing box presence sensor on HST taping heads.)

TAPEROTATIONSENSOR

(See instructions below and also refer to Tape Application Sensor kit instruction manual, pages 18 & 19.)

Note – Tension roller must be replaced with new roller provided in kit. The 3-inch roller is a direct replacement for the 2-inch roller that comes with the Tape Application Sensor Kit. Tension roller is mounted in a certain position within a slot on the taping head side frame. Mark location of existing roller with tape to assure installation of new roller in same relative position as old roller.

- Remove the 1/4-20 hex head screw that fastens the tension roller shaft to the taping head side plate, remove the tension roller/shaft assembly and discard. See Figure 4.

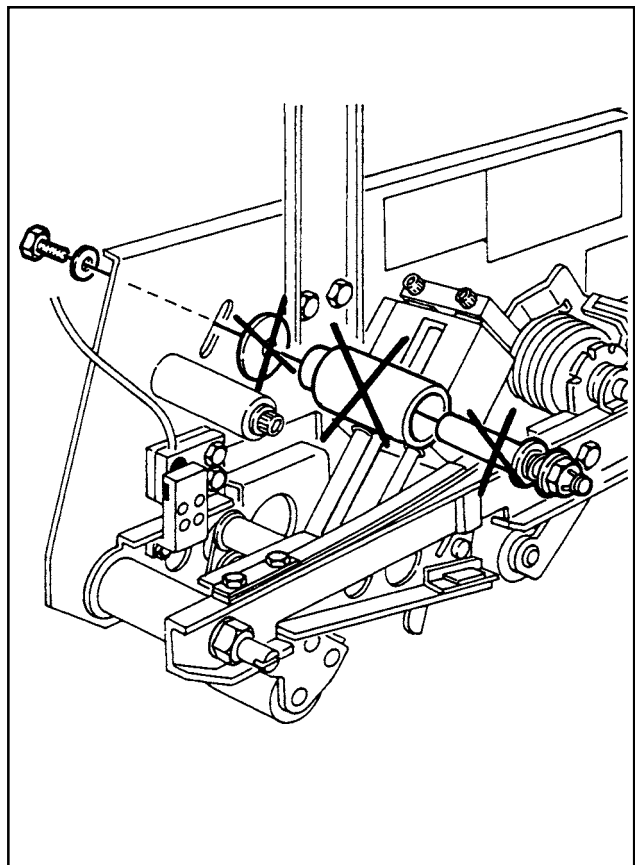


Figure 4

Installation (Continued)

2. Install new parts from kit. Shaft, tension roller, washers, compression spring and hex nut and fasten to taping head side plate with M6 x 12 hex head screw and M6 plain washer. See Figure 5. Install tape rotation sensor between shaft and side plate with sensor cable pointed in same direction as box presence sensor. **Note – Tape rotation sensor REPLACES large plain washer between shaft and taping head side plate. DO NOT USE WASHER.**
3. Adjust roller tension as described in taping head manual.

Note – Be sure to install correct roller on upper/lower taping heads. After placing roller on shaft, rotate roller (roller on upper taping head should rotate in clockwise direction, roller on lower head should rotate in counterclockwise direction) as viewed from outer side of roller. If rotation is incorrect, switch rollers. This note applies to Type 39100 taping heads only. On Models 18600 and 28800, both tension rollers rotate counterclockwise. (Second counterclockwise tension roller must be ordered separately. See parts list, front page.)

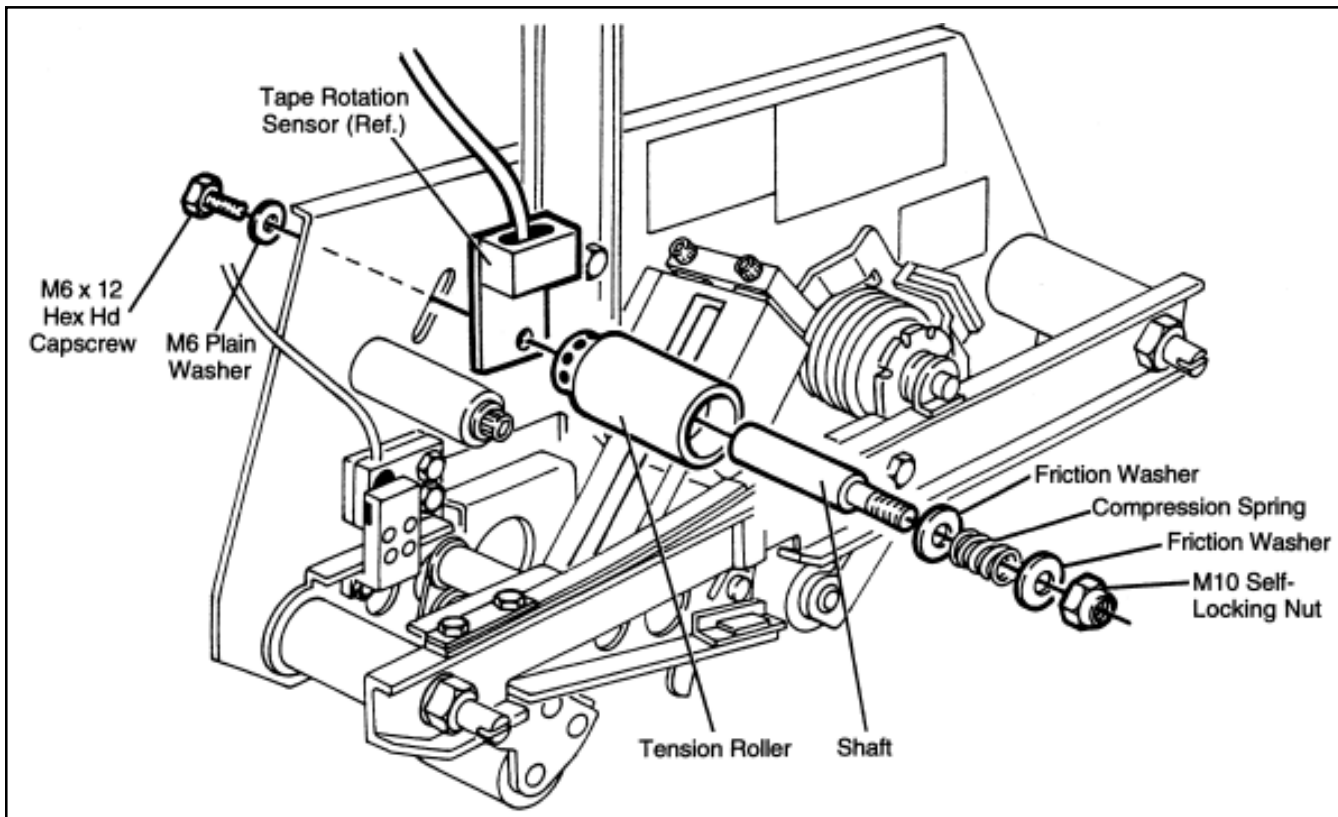


Figure 5

Equipment Warranty and Limited Remedy: THE FOLLOWING WARRANTY IS MADE IN LIEU OF ALL OTHER WARRANTIES, EXPRESS OR IMPLIED, INCLUDING, BUT NOT LIMITED TO, THE IMPLIED WARRANTY OF MERCHANTABILITY, THE IMPLIED WARRANTY OF FITNESS FOR A PARTICULAR PURPOSE AND ANY IMPLIED WARRANTY ARISING OUT OF A COURSE OF DEALING, A CUSTOM OR USAGE OF TRADE:

3M warrants that its 3M-Matic™ P/N 78-8079-5586-5 3-Inch Adapter Kit will be free from defects for ninety (90) days after delivery. If any part is proved to be defective within the warranty period, then the exclusive remedy and 3M's and seller's sole obligation shall be, at 3M's option, to repair or replace the part, provided the defective part is returned immediately to 3M's factory or an authorized service station designated by 3M. A part will be presumed to have become defective after the warranty period unless the part is received or 3M is notified of the problem no later than five (5) calendar days after the warranty period. If 3M is unable to repair or replace the part within a reasonable time, then 3M, at its option, will replace the equipment or refund the purchase price. 3M shall have no obligation to provide or pay for the labor required to install the repaired or replacement part. 3M shall have no obligation to repair or replace (1) those parts failing due to operator misuse, carelessness, or due to any accidental cause other than equipment failure, or (2) parts failing due to non-lubrication, inadequate cleaning, improper operating environment, improper utilities or operator error.

Limitation of Liability: 3M and seller shall not be liable for direct, indirect, special, incidental or consequential damages based upon breach of warranty, breach of contract, negligence, strict liability or any other legal theory.

The foregoing Equipment Warranty and Limited Remedy and Limitation of Liability may be changed only by a written agreement signed by authorized officers of 3M and seller.

"3M-Matic" and "AccuGlide" are trademarks of 3M, St. Paul, Minnesota 55144-1000



Industrial Adhesives and Tapes

3M Center, Building 220-5E-06
St. Paul, MN 55144-1000

Printed in U.S.A.

©3M 1995 44-0009-1864-7(B)